

# Kita City, Tokyo, Flood Hazard Map

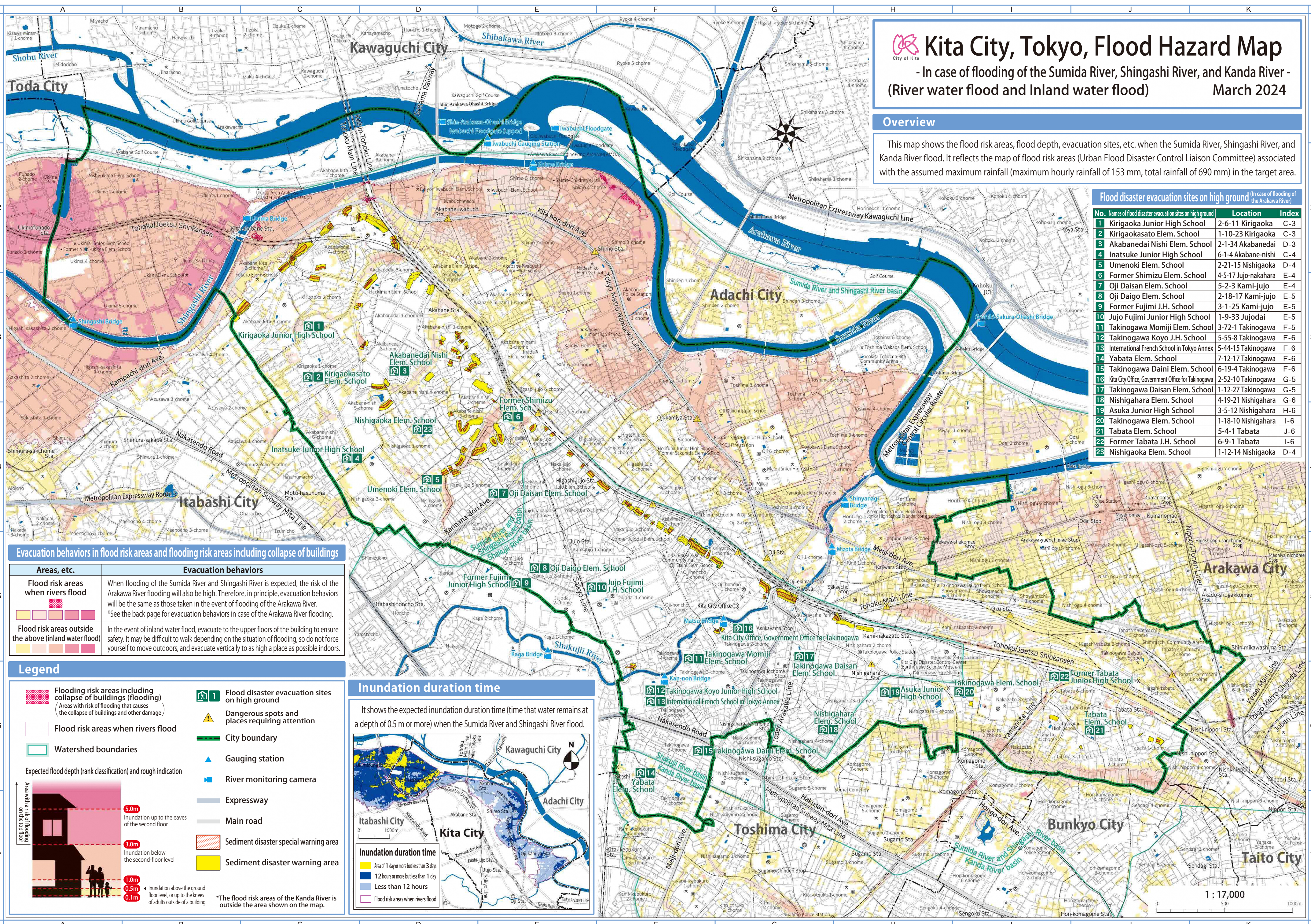
- In case of flooding of the Sumida River, Shingashi River, and Kanda River -  
(River water flood and Inland water flood)

March 2024

### Overview

This map shows the flood risk areas, flood depth, evacuation sites, etc. when the Sumida River, Shingashi River, and Kanda River flood. It reflects the map of flood risk areas (Urban Flood Disaster Control Liaison Committee) associated with the assumed maximum rainfall (maximum hourly rainfall of 153 mm, total rainfall of 690 mm) in the target area.

Flood disaster evacuation sites on high ground (in case of flooding of the Arakawa River)			
No.	Names of flood disaster evacuation sites on high ground	Location	Index
1	Kirigaoka Junior High School	2-6-11 Kirigaoka	C-3
2	Kirigaokasato Elem. School	1-10-23 Kirigaoka	C-3
3	Akabanedai Nishi Elem. School	2-1-34 Akabanedai	D-3
4	Inatsuke Junior High School	6-1-4 Akabane-nishi	C-4
5	Umenoki Elem. School	2-21-15 Nishigaoka	D-4
6	Former Shimizu Elem. School	4-5-17 Jujo-nakahara	E-4
7	Oji Daisan Elem. School	5-2-3 Kami-jujo	E-4
8	Oji Daigo Elem. School	2-18-17 Kami-jujo	E-5
9	Former Fujimi J.H. School	3-1-25 Kami-jujo	E-5
10	Jujo Fujimi Junior High School	1-9-33 Jujodai	E-5
11	Takinogawa Momiji Elem. School	3-72-1 Takinogawa	F-5
12	Takinogawa Koyo J.H. School	5-55-8 Takinogawa	F-6
13	International French School in Tokyo Annex	5-44-15 Takinogawa	F-6
14	Yabata Elem. School	7-12-17 Takinogawa	F-6
15	Takinogawa Daini Elem. School	6-19-4 Takinogawa	F-6
16	Kita City Office, Government Office for Takinogawa	2-52-10 Takinogawa	G-5
17	Takinogawa Daisan Elem. School	1-12-27 Takinogawa	G-5
18	Nishigahara Elem. School	4-19-21 Nishigahara	G-6
19	Asuka Junior High School	3-5-12 Nishigahara	H-6
20	Takinogawa Elem. School	1-18-10 Nishigahara	I-6
21	Tabata Elem. School	5-4-1 Tabata	J-6
22	Former Tabata J.H. School	6-9-1 Tabata	I-6
23	Nishigaoka Elem. School	1-12-14 Nishigaoka	D-4



### Evacuation behaviors in flood risk areas and flooding risk areas including collapse of buildings

Areas, etc.	Evacuation behaviors
<b>Flood risk areas when rivers flood</b>	When flooding of the Sumida River and Shingashi River is expected, the risk of the Arakawa River flooding will also be high. Therefore, in principle, evacuation behaviors will be the same as those taken in the event of flooding of the Arakawa River. *See the back page for evacuation behaviors in case of the Arakawa River flooding.
<b>Flood risk areas outside the above (inland water flood)</b>	In the event of inland water flood, evacuate to the upper floors of the building to ensure safety. It may be difficult to walk depending on the situation of flooding, so do not force yourself to move outdoors, and evacuate vertically to as high a place as possible indoors.

### Legend

- Flooding risk areas including collapse of buildings (flooding) (Areas with risk of flooding that causes the collapse of buildings and other damage)
- Flood risk areas when rivers flood
- Watershed boundaries
- Expected flood depth (rank classification) and rough indication
- Area with a risk of flooding on the top floor
- 5.0m: Inundation up to the eaves of the second floor
- 3.0m: Inundation below the second-floor level
- 1.0m: Inundation above the ground floor level, or up to the knees of adults outside of a building
- 0.5m
- 0.1m
- Flood disaster evacuation sites on high ground
- Dangerous spots and places requiring attention
- City boundary
- Gauging station
- River monitoring camera
- Expressway
- Main road
- Sediment disaster special warning area
- Sediment disaster warning area
- \*The flood risk areas of the Kanda River is outside the area shown on the map.

### Inundation duration time

It shows the expected inundation duration time (time that water remains at a depth of 0.5 m or more) when the Sumida River and Shingashi River flood.

The inset map shows the expected inundation duration time for the Sumida River and Shingashi River basins. It is color-coded to indicate different durations: yellow for 1 day or more but less than 3 days, blue for 12 hours or more but less than 1 day, and light blue for less than 12 hours. The map also shows the locations of flood risk areas when rivers flood.